

In Light of The New

Examining the Boundaries of Photography



Laurie Lambrecht
Bark/Cloth (Bridgehampton, Long Island 2016), 2018
hand embroidered archival pigment print on linen
17 1/2 x 12 inches
\$3,200



Laurie Lambrecht
Bark/Cloth (VCCA, Virginia 2017), 2017
hand embroidered archival pigment print on linen
17 1/2 x 12 inches
\$3,200



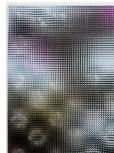
Laurie Lambrecht
Bark/Cloth (Wyoming, 2015), 2017
hand embroidered archival pigment print on linen
17 1/2 x 12 inches
\$3,200



Laurie Lambrecht
Bark/Cloth (VCCA, Virginia 2017, #3), 2017
hand embroidered archival pigment print on linen
17 1/2 x 12 inches
\$3,200



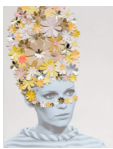
Rusty Scruby
Bark, 2006
archival photographic reconstruction
35 x 26 inches
\$6,400



Rusty Scruby
Walking Stick: 15, 2011
archival photographic reconstruction
49 3/4 x 38 x 4 inches
\$8,800



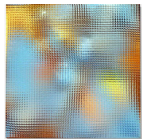
Kelly O'Connor
Bottom of the Pool 20 (Charger House Hotel, Buffalo, NY), 2015
digital print and collage
14 x 20 inches
\$2,800



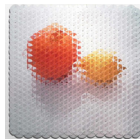
Kelly O'Connor
No Man's Land No.8, 2016
found image, paper and vintage record cover on watercolor paper
22 1/2 x 13 inches
\$4,400



Rusty Scruby
Rip Van Winkle - Dust, 2012
archival photographic reconstruction
39 1/2 x 30 inches
\$9,000



Rusty Scruby
Looking for the Girl with the Flaxen Hair, 2011
archival photographic reconstruction
38 x 38 inches
\$7,200



Rusty Scruby
Orange and Lemon, 2011
archival photographic reconstruction
33 1/2 x 33 inches
\$7,500



Kelly O'Connor
No Man's Land No.16 (Pink Hammock), 2016
mixed media on paper
33 x 44 inches
\$7,800



Laurie Lambrecht
Bark/Cloth (Portland, OR, 2018), 2019
hand embroidered archival pigment print on linen
17 1/2 x 12 inches
\$3,200



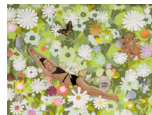
Laurie Lambrecht
Bark/Cloth (Ålvik, Norway, 2018), 2019
hand embroidered archival pigment print on linen
17 1/2 x 12 inches
\$3,200



Kelly O'Connor
Bottom of the Pool (San Andreas Fault), 2018
digital print and mixed media on paper
45 1/2 x 69 1/2 inches
\$14,600



Rusty Scruby
Keeping up Appearances, 2012
archival photographic reconstruction
35 1/2 x 46 inches
\$6,500



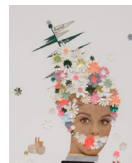
Kelly O'Connor
No Man's Land No.17 (Green), 2016
mixed media on paper
19 1/2 x 25 1/2 inches
\$5,000



Rusty Scruby
Dusk, 2012
archival photographic reconstruction
41 1/2 x 32 inches
\$9,000



Rusty Scruby
Lisa in Red Dress, 2012
archival photographic reconstruction
54 1/2 x 30 inches
\$9,000



Kelly O'Connor
No Man's Land No.14 (Beverly), 2016
mixed media on paper
32 1/2 x 26 1/2 inches
\$6,500



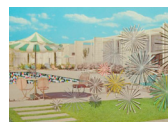
Kelly O'Connor
No Man's Land No.10, 2016
mixed media on paper
20 x 13 inches
\$4,400



Laurie Lambrecht
Bark/Cloth (Bois de Boulogne, Paris 2018), 2019
hand embroidered archival pigment print on linen
17 1/2 x 12 inches
\$3,200



Laurie Lambrecht
Bark/Cloth (Guilin, 2009, violet), 2017
hand embroidered archival pigment print on linen
17 1/2 x 12 inches
\$3,200

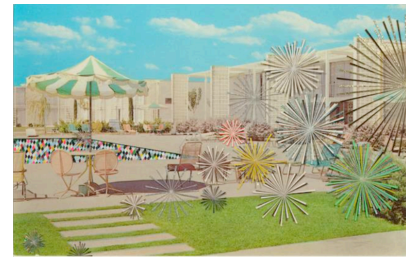


Kelly O'Connor
Bottom of the Pool (El Paso, TX), 2018
digital print and mixed media on paper
45 x 69 3/4 inches
\$14,600

In Light of the New

Examining the Boundaries of Photography

March 22, 2019 – July 29, 2019



Kelly O'Connor, *Bottom of the Pool (El Paso, TX)*, 2018, digital print and mixed media on paper, 45 x 69.75 inches.

In Light of the New is a group show featuring work by three artists, each who have trademarked their own unique methods of media experimentation departing from traditional photography. Using techniques such as collage, embroidery, and weaving, exhibited artists Laurie Lambrecht, Rusty Scruby and Kelly O'Connor push the boundaries of how we know photography.

New York-based Laurie Lambrecht found inspiration earlier in her career while documenting notable artist Roy Lichtenstein in his studio during her time as his assistant. From then on, Lambrecht's photographic studies developed into an ongoing documentation of art and nature. In her most recent body of work, Lambrecht experiments with images captured of tree bark in various significant geographical destinations both close to her home and throughout her remote world-wide travels. Lambrecht prints these images onto linen, and then embellishes the surface with hand-woven embroidery techniques. The introduction of unexpected color and texture adds a punchy dimension to the otherwise organic images, while still retaining a harmonious composition, causing the viewer to question what is a result of Lambrecht's clever hand, and what is simply a natural quirk in nature.

Dallas-based artist Rusty Scruby uses a more intrusive process of manipulation in his body of work. Bringing his diverse academic background in engineering and music theory into his artwork, Scruby is fascinated with concepts of deconstruction and manipulation, as expressed in his archival photographic reconstructive works which lie somewhere between two-dimensional and sculptural. Scruby transforms images of traditional subject matter such as still lifes and landscape by cutting and weaving them until the subject matter abstracted oftentimes to the point of being unrecognizable. Along with mathematics, Scruby's work is also often a departure of his fascination with music, which can inform his artwork titles.

Similar to Scruby's process, experimentation with scale and color is an integral part of San Antonio-based artist Kelly O'Connor's process. Her work is immediately recognizable by her iconic imagery, which typically references scenes of pop culture and the current state of our society. Images discovered throughout her work are typically sourced from iconic films, advertisements, and travel memorabilia from the 50's and 60's. Touching on themes of gender, femininity and family, O'Connor draws from iconic characters and western folklore, and further embellishes her works with deliciously colored and textured materials from found paper to vintage record covers. The resulting densely layered artwork transports the viewer into a dream-like space where they can draw their own conclusions as to the narrative unfolding in the elaborate scenes created by O'Connor.

This exhibition is organized by Kinzelman Art Consulting on behalf of the owners of Bank of America Center and M-M Properties. For additional information about the exhibition, please call Kinzelman Art Consulting at 713.533.9923 or visit www.kinzelmanart.com.