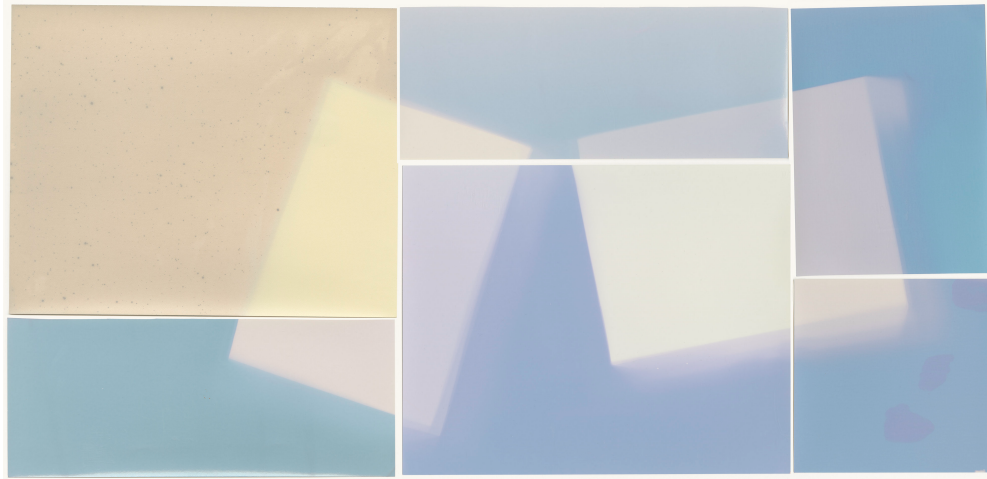


Portals to Abstraction

Friday, March 31st, 2023 – Friday, July 28th, 2023



Portals to Abstraction celebrates the captivating complexities of abstract photography, and the way in which each artist represents light and space through their work. The exhibition features a diverse range of techniques featuring three female artists, Deborah Bay, Brenda Biondo and Amanda Marchand. Despite appearing to be mixed media or paintings, as the viewer explores the exhibition, they will come to realize that each work is uniquely photography-based, highlighting the immense creativity of each artist.

Deborah Bay uses the refraction of light through prisms and a masterful assemblage of color to create a sharp sense of foreground and background. In contrast, Brenda Biondo takes what light we see at one moment of time, with other magical moments of color that she reaches out and plucks from the sky. Biondo shakes the vision and combines multiple images into an artistic abstraction that one does not see as a literal photographic work, but can pick up on snippets of familiar forms throughout each composition. While some of her works are more abstract than others, all have an overall grounding sense to them as a result of being rooted in nature and light. Lastly, functioning somewhere between a physical space and the imagined, Amanda Marchand uses the effect of light on various types and ages of photo sensitive paper to create contemplative images that honor our endangered world. These lumen-based works, which are the result of controlled light exposure and collage, are Marchand's imagined recreation of flora and birds through an abstracted lens. While the artist takes inspiration from specific forms in nature, her geometric works are open to the viewer's interpretation.

Similar to an abstract painting, each of these photo-based works has the ability to evoke specific moods through their atmospheric imagery. *Portals to Abstraction* offers a unique opportunity to explore the boundless creativity and technical mastery of these three remarkable artists. This exhibition was organized by Kinzelman Art Consulting, in partnership with M-M Properties and Foto Relevance Gallery. All works on loan are courtesy of Foto Relevance Gallery. The artwork pictured above is *Drawer I* by Amanda Marchand (archival pigment print collage, 24 x 50 inches). For inquiries, please reach out to kimberly@kinzelmanart.com.

Exhibition Checklist



BRENDA BIONDO
Modality No. 11, 2011
dye sublimation on aluminum
47 x 31 inches
Edition 1 of 9
\$6,500



BRENDA BIONDO
Moving Picture No. 10, 2016
dye sublimation on aluminum
38 x 26 inches
Edition of 9
\$5,500



AMANDA MARCHAND
My Mother's Story, 2019
archival pigment print collage
30 x 38 inches
Edition of 3
\$5,900



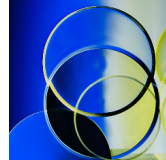
AMANDA MARCHAND
Horizon - Paper Negative, 2020
archival pigment print diptych
21 x 13.5 inches
Edition of 3
\$2,800



AMANDA MARCHAND
Louisiana Waterthrush, 2022
archival pigment print collage
22 x 17 inches
Edition of 3
\$3,000



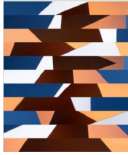
DEBORAH BAY
After the Rain, 2022
archival pigment print
24 x 24 inches
Edition of 5
\$3,500



DEBORAH BAY
Circular Domains, 2016
archival digital print
20 x 20 inches
Edition of 10
\$3,000



DEBORAH BAY
Spherical Harmonics, 2019
archival pigment print
24 x 36 inches
Edition of 7
\$4,000



BRENDA BIONDO
Modality #2, 2016
dye sublimation on aluminum
47 x 40 inches
Edition of 9
\$6,500



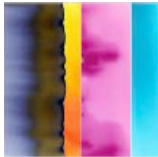
AMANDA MARCHAND
Drawer 1, 2018
archival pigment print collage
24 x 50 inches
Edition of 3
\$5,900



AMANDA MARCHAND
Event Horizon (BlueGreen), 2022
archival pigment print
24 x 19.5 inches
Edition of 3
\$3,100



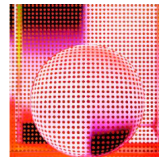
DEBORAH BAY
Line of Beauty, 2018
archival pigment print
24 x 48 inches
Edition of 7
\$4,500



DEBORAH BAY
The Watching Eye in CMYK, 2022
archival pigment print, 3 panels
15 x 15 inches
Edition of 5
\$2,000



BRENDA BIONDO
Modality No. 20, 2017
dye sublimation on aluminum
20 x 60 inches
Edition of 5
\$6,500



DEBORAH BAY
Circular Thinking I, 2018
archival pigment print
40 x 40 inches
Edition of 3
\$5,600



AMANDA MARCHAND
Purple Coneflower, 2020
pigment print collage
22 x 23.5 inches
Edition of 3
\$3,300



AMANDA MARCHAND
Broad Beech Fern, 2022
archival pigment print collage
22 x 15 inches
Edition of 3
\$3,000



AMANDA MARCHAND
Spalding's Campion II, 2019
archival pigment print collage
22 x 17 inches
Edition of 3
\$3,000



AMANDA MARCHAND
Red Notebook II, 2022
archival pigment print collage
8.5 x 6.5 inches
Edition of 3
\$1,000



AMANDA MARCHAND
Lumen Notebook 3, 2018
archival pigment print collage
11 x 13 inches
Edition of 3
\$1,600



BRENDA BIONDO
Modality No. 5, 2016
dye sublimation on aluminum
32.5 x 47 inches
Edition of 9
\$6,500



DEBORAH BAY
Black is Black, 2022
acrylic facemount panels
12 x 48 inches each
Edition of 5
\$7,000